



SPECIFICATIONS for LG HERMETIC COMPRESSOR

R22

Customer : -

Sep 21st , 2016 Rev.0

Q J 2 9 2 P B A

1PH - 220-240V - 50Hz

Application Range

Compressor Cooling	Natural	
Eva. Temp. Range	-10°C ~ 12°C	14°F ~ 54°F
Condensing Temp.	65°C max.	149°F max.
Return Gas Temp.	35°C max.	95°F max.
Discharge gas Temp.	115°C max.	239°F max.
Motor Wire Temp.	130°C max.	266°F max.

Rated Performance

Capacity	16,700 / 16,900 Btu/h	4,894 / 4,953 W
Motor Input	1,575 / 1,625 W	
Current	7.3 / 7.2 A	
EER	10.6 / 10.4 Btu/W	3.11 / 3.05 W/W

Compressor Data

Design	Rolling Piston Typed Rotary
Displacement	29.2 cc/rev
Oil / Oil Charge	SUNISO 4GSI MTMOSATM05 / 450±10 cc
Weight	15.9 Kg 35.05 lb

Motor Data

Motor Type	2 Pole Induction (PSC)
Rated Output	290 W
Winding Resistance (at 75°C)	Main 1.95 ±7% Ω Sub 3.79 ±7% Ω
Voltage Range	198 V to 264 V
Locked Rotor Amps.	37.0 Amps.

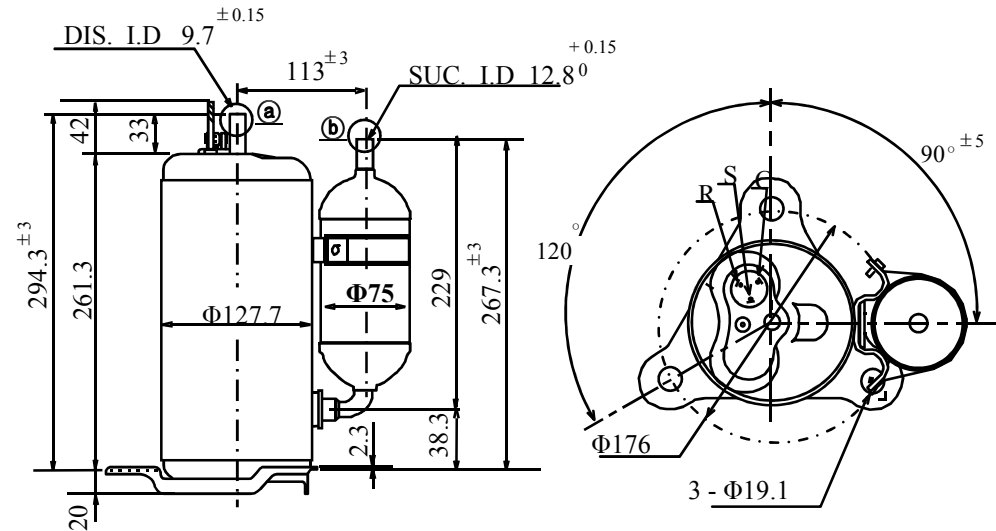
Electrical Components

Running Capacitor	35 MFD 400 VAC
Overload Protector	Internal type.

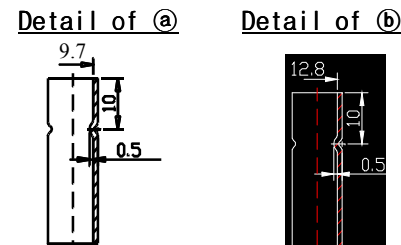
Capacity Test Conditions

Evaporating Temp.	7.2°C	45°F
Condensing Temp.	54.4°C	130°F
Return Gas Temp.	35.0°C	95°F
Liquid Temp.	46.1°C	115°F
Ambient Temp.	35.0°C	95°F

Standard Dimensions



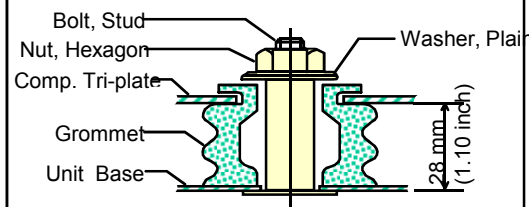
Suction & Discharge Tube detail



Refrigerant Charge Limit

[WRAC for Cooling Only] 1,670g Max
 [WRAC for Heat Pump] 1,250g Max
 [SRAC for Cooling Only] 1650g Max
 [SRAC for Heat Pump] 1100g Max

Compressor Mounting



Wiring Diagram

