



PRELIMINARY SPECIFICATIONS for LG HERMETIC COMPRESSOR

R22

Customer : -

Aug 2nd, 2016 Rev.0

QVS325PA 1PH - 220-240V – 50Hz

Application Range

Compressor Cooling	Natural	
Eva. Temp. Range	-10°C ~ 12°C	14°F ~ 54°F
Condensing Temp.	65°C max.	149°F max.
Return Gas Temp.	35°C max.	95°F max.
Discharge gas Temp.	115°C max.	239°F max.
Motor Wire Temp.	130°C max.	266°F max.

Rated Performance (Not fix)

Capacity	18,800 / 18,900 Btu/hr	5,510 / 5,539 Watts
Motor Input	1,757 / 1,840 W	
Current	8.2 / 8.1 A	
EER	10.7 / 10.3 Btu/W.hr	3.14 / 3.01 W/W

Compressor Data

Design	Rolling Piston Typed Rotary	
Displacement	32.5 cc/rev	
Oil / Oil Charge	NM56 or 4GSI	540 cc
Weight	19.5 Kg	

Motor Data

Motor Type	2 Pole Induction (PSC)	
Rated Output	- W (Not fix)	
Winding Resistance (at 25°C)	Main	- ± 7 %Ω
	Sub	- ± 7 %Ω
Voltage Range	198 V ~ 264 V (Overload)	
Locked Rotor Amps.	Not fixed	

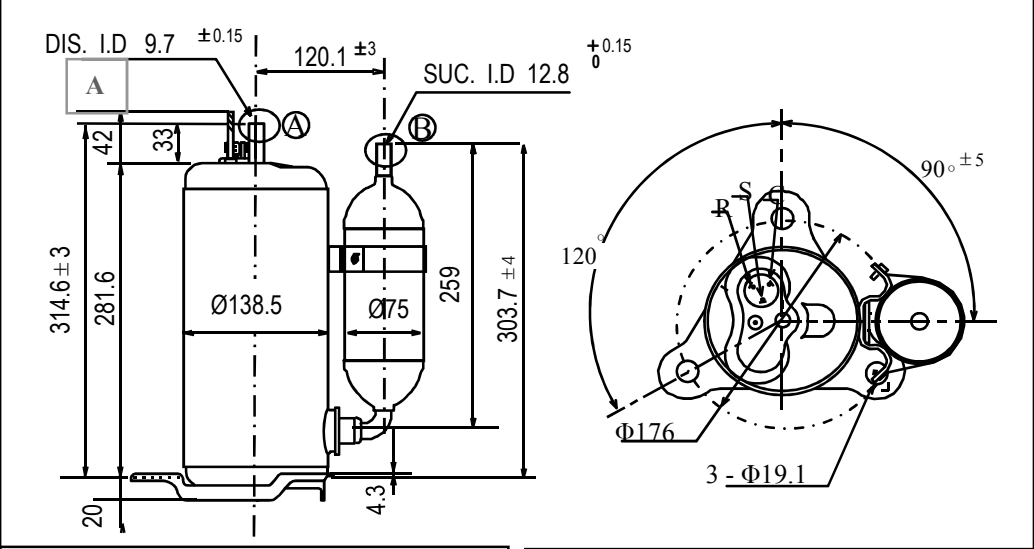
Electrical Components

Running Capacitor	50μF 400 VAC	(Not fix)
Overload Protector	Internal type	

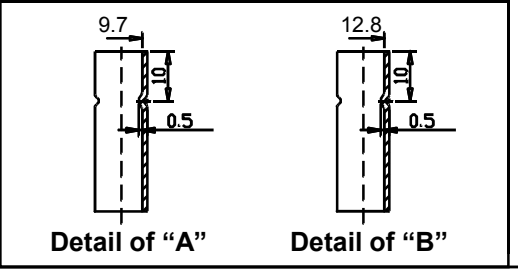
Capacity Test Conditions

Evaporating Temp.	7.2°C	45°F
Condensing Temp.	54.4°C	130°F
Return Gas Temp.	35.0°C	95°F
Liquid Temp.	46.1°C	115°F
Ambient Temp.	35.0°C	95°F

Standard Dimensions



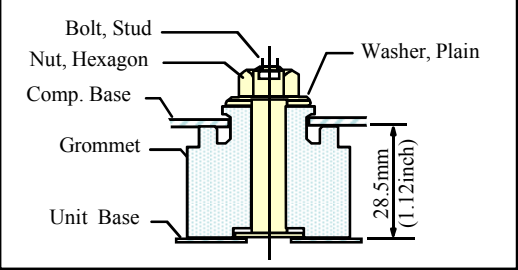
Suction & Discharge Tube detail



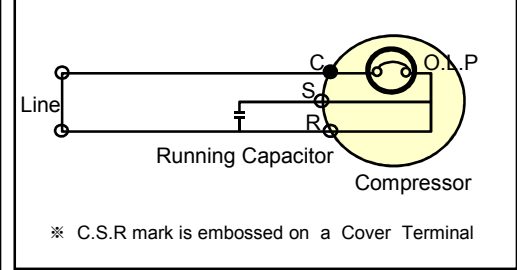
Refrigerant Charge Limit

[WRAC for Cooling type] Max 2,040g
 [WRAC for Heating type] Max 1,530g
 [SRAC for Cooling type] Max 1,530g
 [SRAC for Heating type] Max 1,020g

Compressor Mounting



Wiring Diagram



Specifications are subject to change without notice.
 Normal Performance value ±5%.